

Welcome!

Only our Project Team presenters will have audio and video sharing capabilities during this meeting.

We encourage you to submit questions at any time.
To do this, look for the Q&A button in your Zoom window.

If you'd rather discuss your questions in a separate session with our Project Team, email us at interchange65@gmail.com.

Presentation slides along with all maps and briefing materials you see today will be available on KYTC District 5's website.
If we aren't able to answer your questions today, we are sending a meeting recap tomorrow with links to download materials.
All questions and answers will also be summarized.

I-65/I-264 Interchange Planning Study

Elected Officials and Stakeholders Meeting
Proposed Improvement Strategies

10/20/2020



MEET THE PROJECT TEAM



Project Manager:
Amanda Desmond, PE
*Kentucky Transportation
Cabinet District 5*



Project Team:

Rob Hans, WSP (*Proposed Improvements*)
Anne Warnick, WSP (*Proposed Improvements*)
Corrin Gulick, WSP (*Proposed Improvements*)
Rachel Nix, C2 Strategic (*Public Involvement*)

TODAY WE'LL COVER



**Project
Goals**



**Purpose
& Need**



**Long-Term
Improvements**



**Short-Term
Improvements**



**Public
Involvement**



**Questions &
Answers**

Submit questions at any time by clicking the Q&A button in your Zoom window. We'll review as we go and anything that isn't covered will be answered at the end of the presentation.

This presentation is being recorded. The PDF of the presentation along with all maps and briefing materials will be available on KYTC's website and emailed to you.

PROJECT GOALS

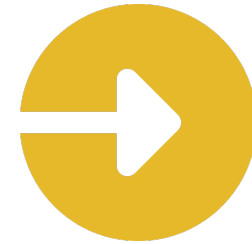
Kentucky Transportation Cabinet is studying the I-65/I-264 Interchange for short-term and long-term improvements to:



**Reduce
Congestion**



**Improve
Safety**



**Improve
Access**



**Ensure
Reliable Freight
Movement**



**Mitigate
Environmental
Impacts**

Project goals are to increase safety for all users, manage and reduce roadway congestion where appropriate, ensure timely and efficient movement of freight within, departing, and entering the region, and reduce and/or mitigate negative environmental impacts, including climate change.

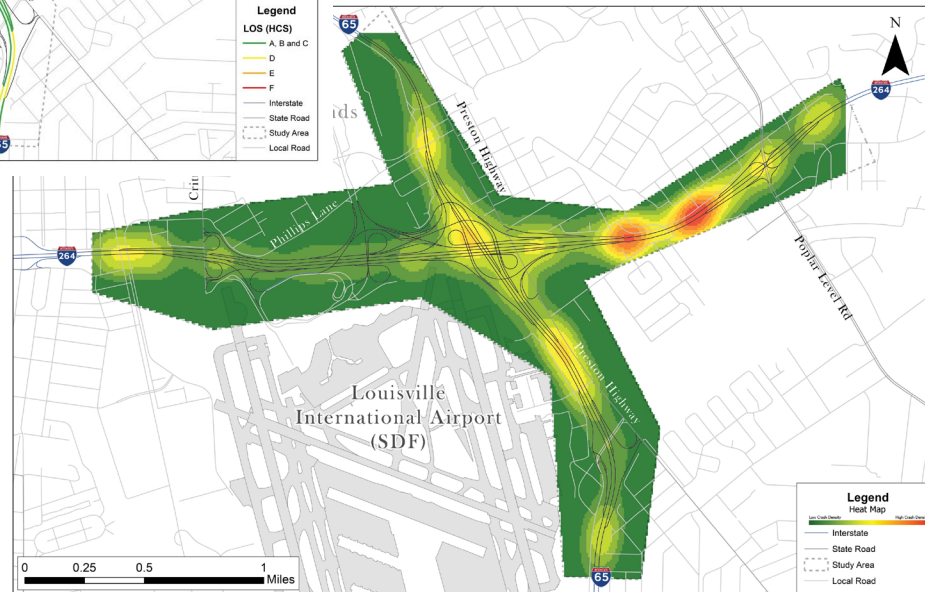
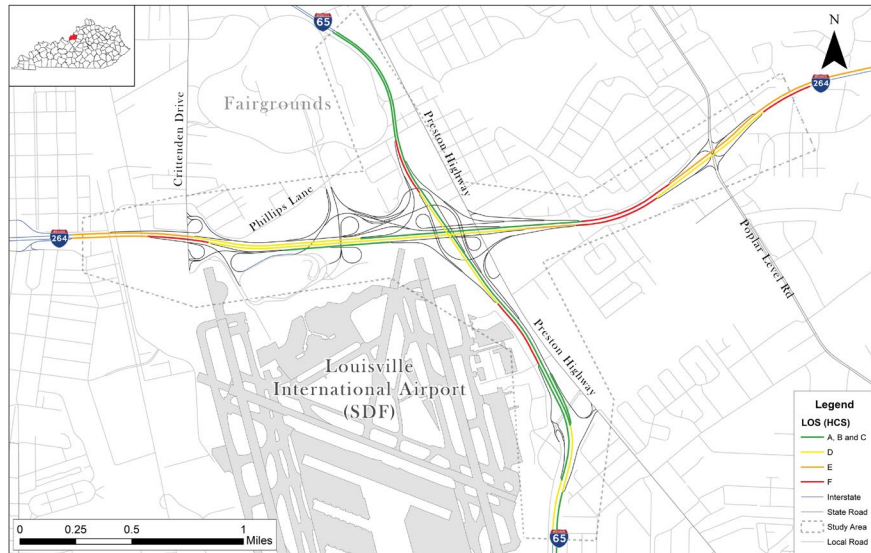
PURPOSE & NEED



The purpose of the I-65/I-264 Interchange Planning Study is to identify the short-term and long-term improvements to the interchange system that could reduce congestion and improve safety. Peak hour traffic creates large queues that extend onto mainline I-65 and I-264 causing extreme speed differentials.

The I-65/I-264 interchange was ranked as the number one highest crash interchange in the Kentuckiana Regional Planning & Development Agency (KIPDA) MPO region. KIPDA serves as the Metropolitan Planning Organization (MPO) for the Louisville/Jefferson County KY – IN urbanized area.

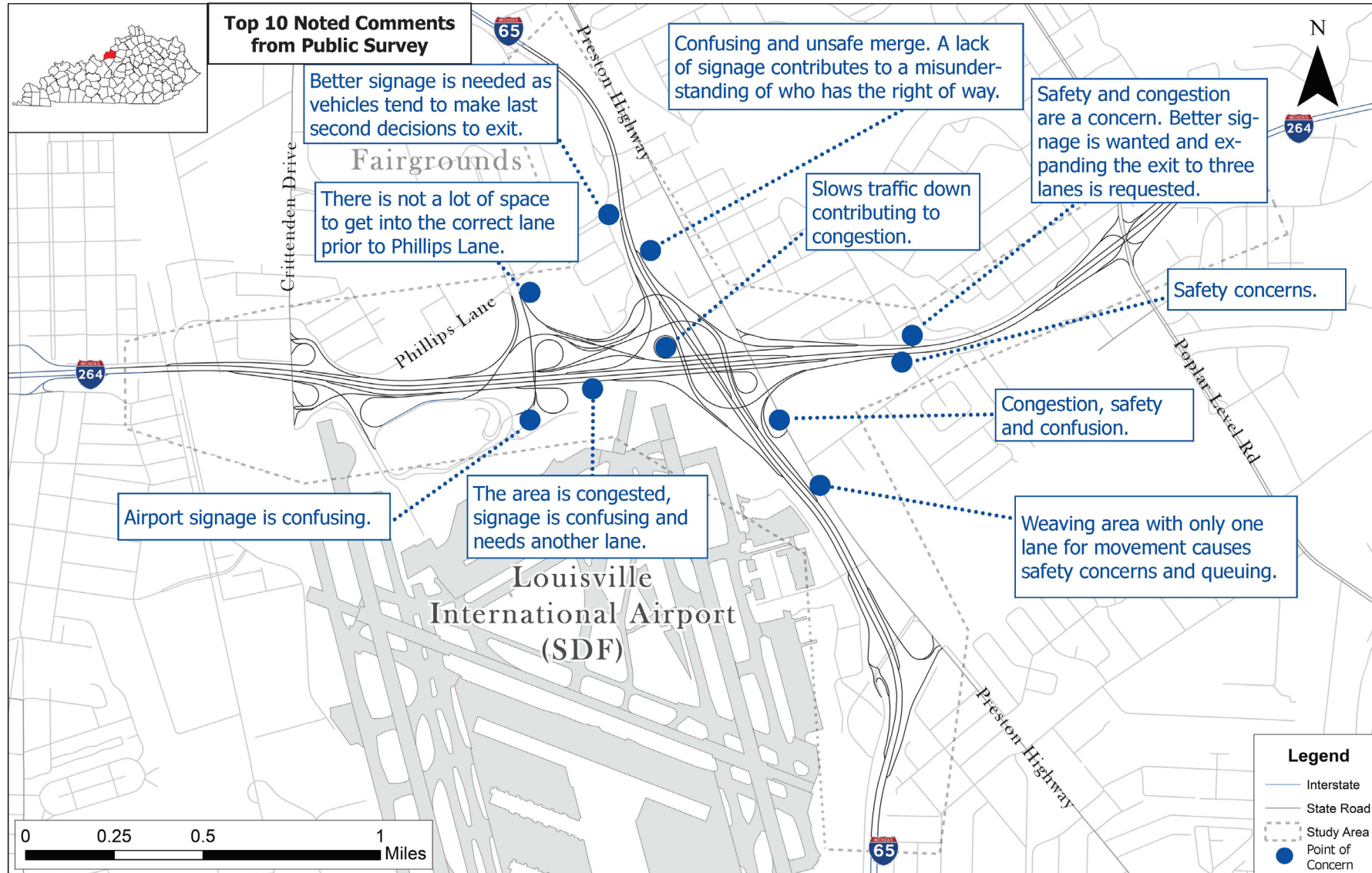
PROPOSED IMPROVEMENT STRATEGIES



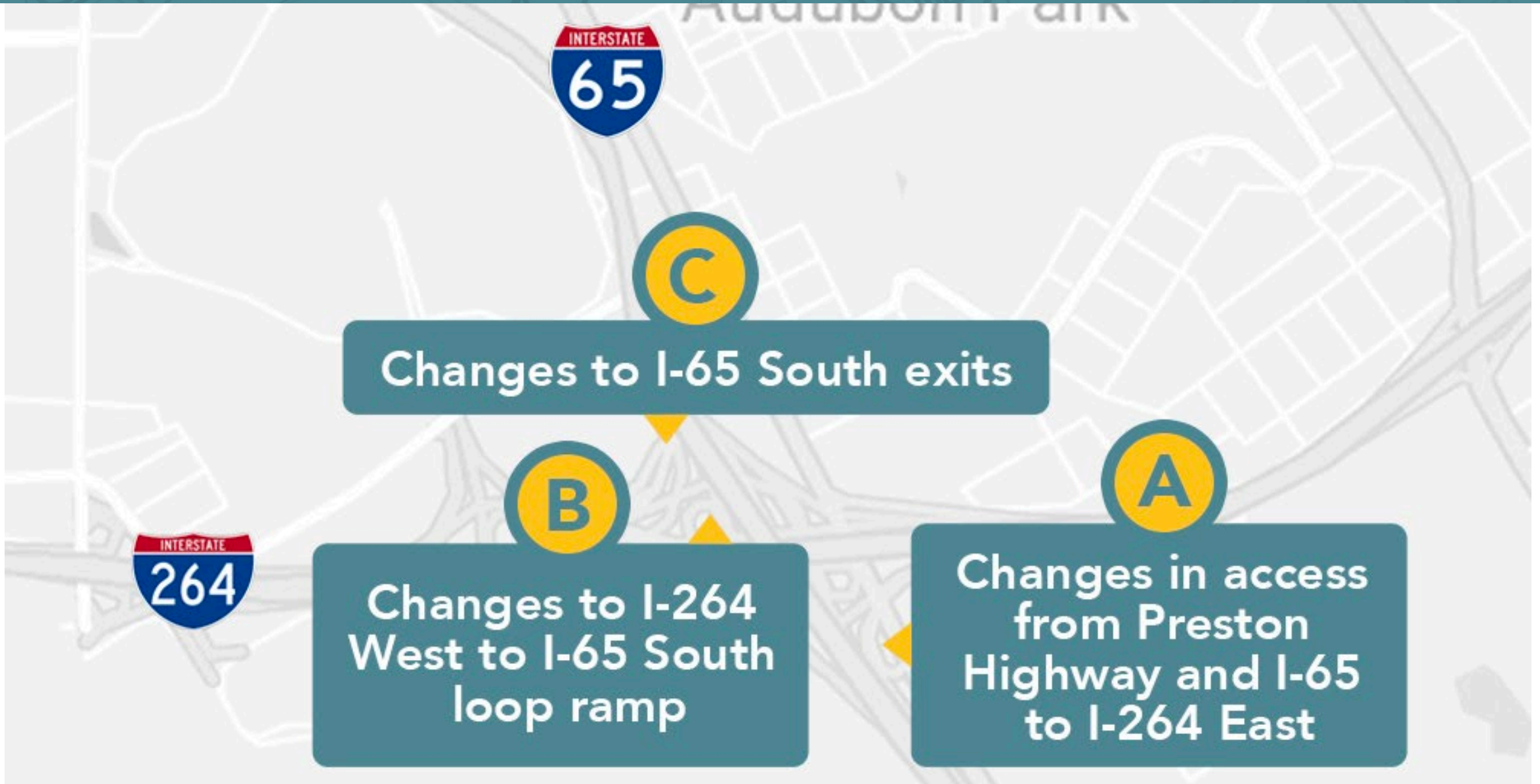
DATA ANALYZED

- Traffic
- Safety
- Existing Roadway Conditions
- Public Feedback

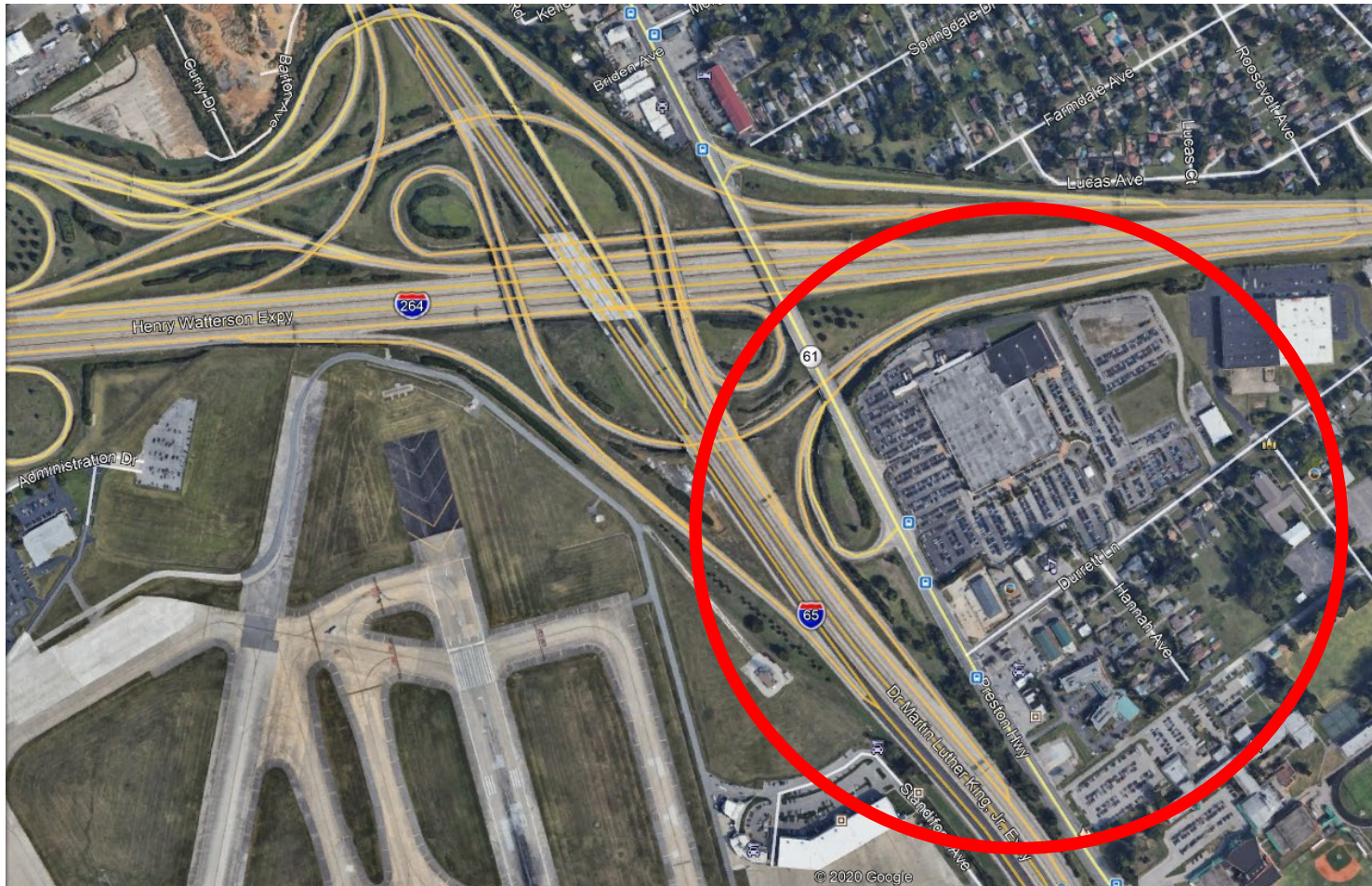
PUBLIC FEEDBACK



LONG-TERM IMPROVEMENT STRATEGIES



LONG-TERM IMPROVEMENT STRATEGIES



IMPROVEMENT STRATEGY A

- Problem: Access to I-264 eastbound from Preston Highway and I-65 causes heavy congestion

COUNTY OF	ITEM NO.	SHEET NO.
JEFFERSON		



FILE NAME: J:\187432 - I-65-I-264 INTERCHANGE&O CADD\ALTERNATES\SHEET A-1.DGN

USER: garmstrong
DATE PLOTTED: October 9, 2020

E-SHEET NAME:

Power InRoads v8.11.9.387

A-1



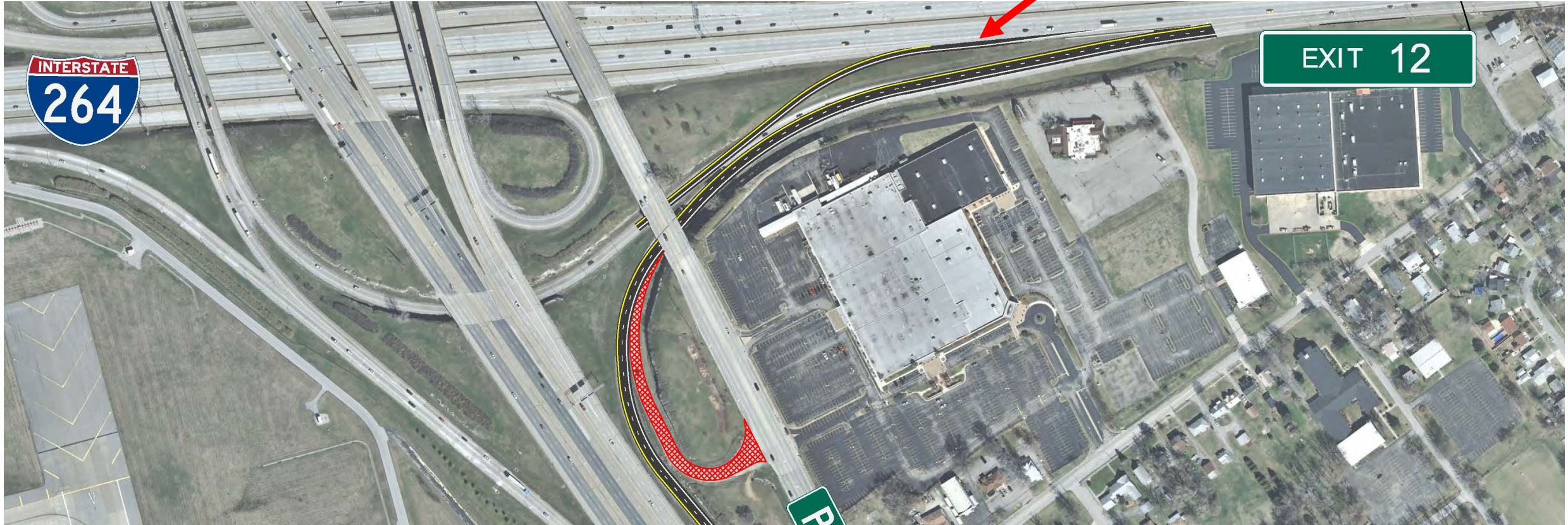
EXIT 12

Preston Hwy

INTERSTATE
65

EXIT 131 A

A-1



COUNTY OF	ITEM NO.	SHEET NO.
JEFFERSON		



EXIT 12

Preston Hwy



EXIT 131 A

A-1

FILE NAME: J:\187432 - I-65-1264 INTERCHANGE & O CAD\ALTERNATES\187432 A-1.DGN

USER: jgarnett
DATE PLOTTED: October 9, 2020

E-SHEET NAME:

Power InRoads v8.11.9.387

IMPROVEMENT STRATEGY A-2



COUNTY OF	ITEM NO.	SHEET NO.
JEFFERSON		



EXIT 12

Preston Hwy



EXIT 131 A

A-2

FILE NAME: J:\187432 - I-65-1264 INTERCHANGE & O CAD\ALTERNATES\SHEET A2-1.DGN

USER: garmstrong
DATE PLOTTED: October 9, 2020

E-SHEET NAME:

Power InRoads v8.11.9.387

IMPROVEMENT STRATEGY A-3





COUNTY OF	ITEM NO.	SHEET NO.
JEFFERSON		

FILE NAME: J:\187432 - I-65-I-264 INTERCHANGE & O CADD\ALTERNATES\SHEET A3-1.DGN

USER: garmstrong
DATE PLOTTED: October 9, 2020

E-SHEET NAME:

Power InRoads v8.11.9.387

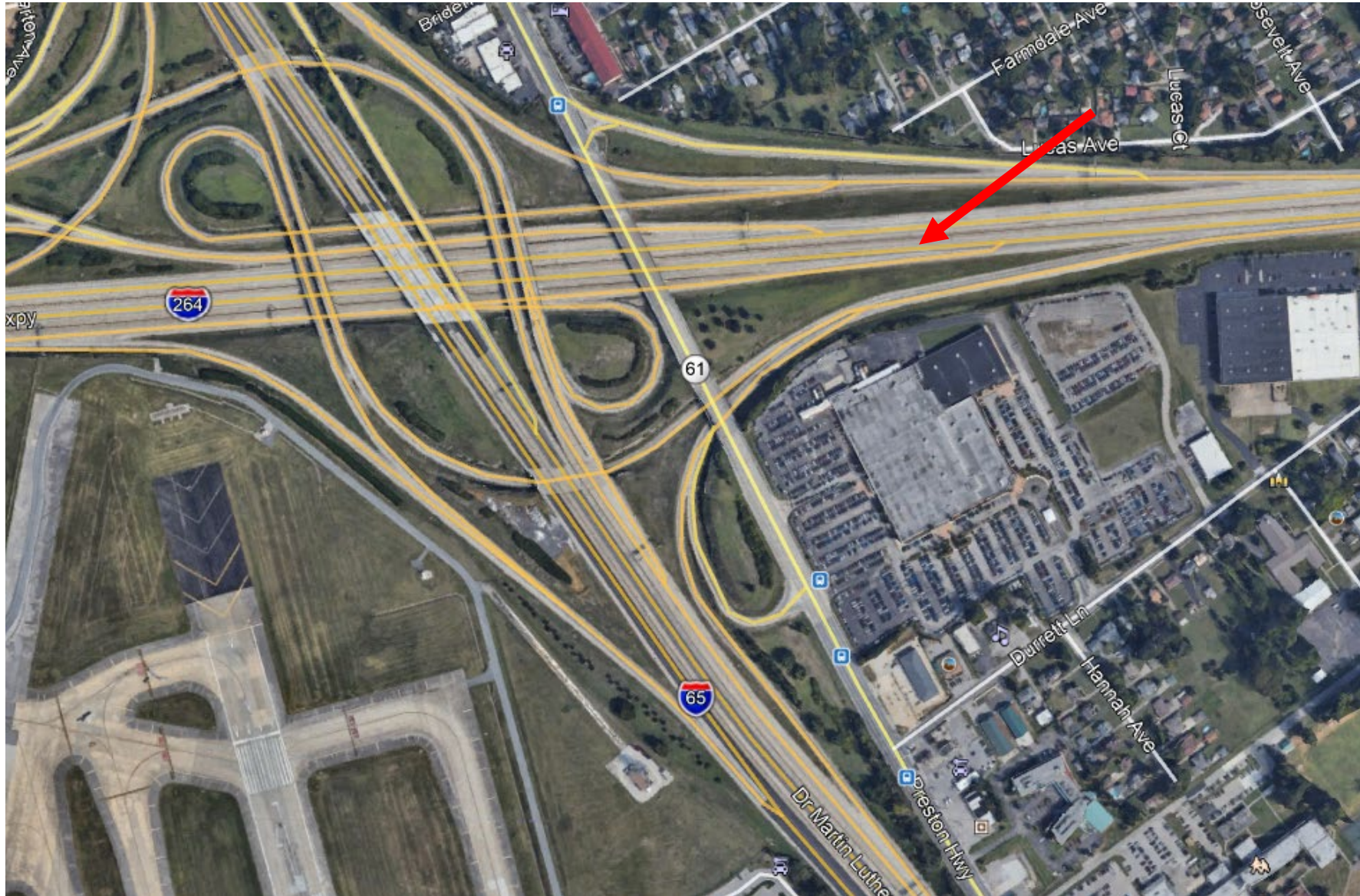
EXIT 131 A

A-3



Preston Hwy

ALL A IMPROVEMENT STRATEGIES



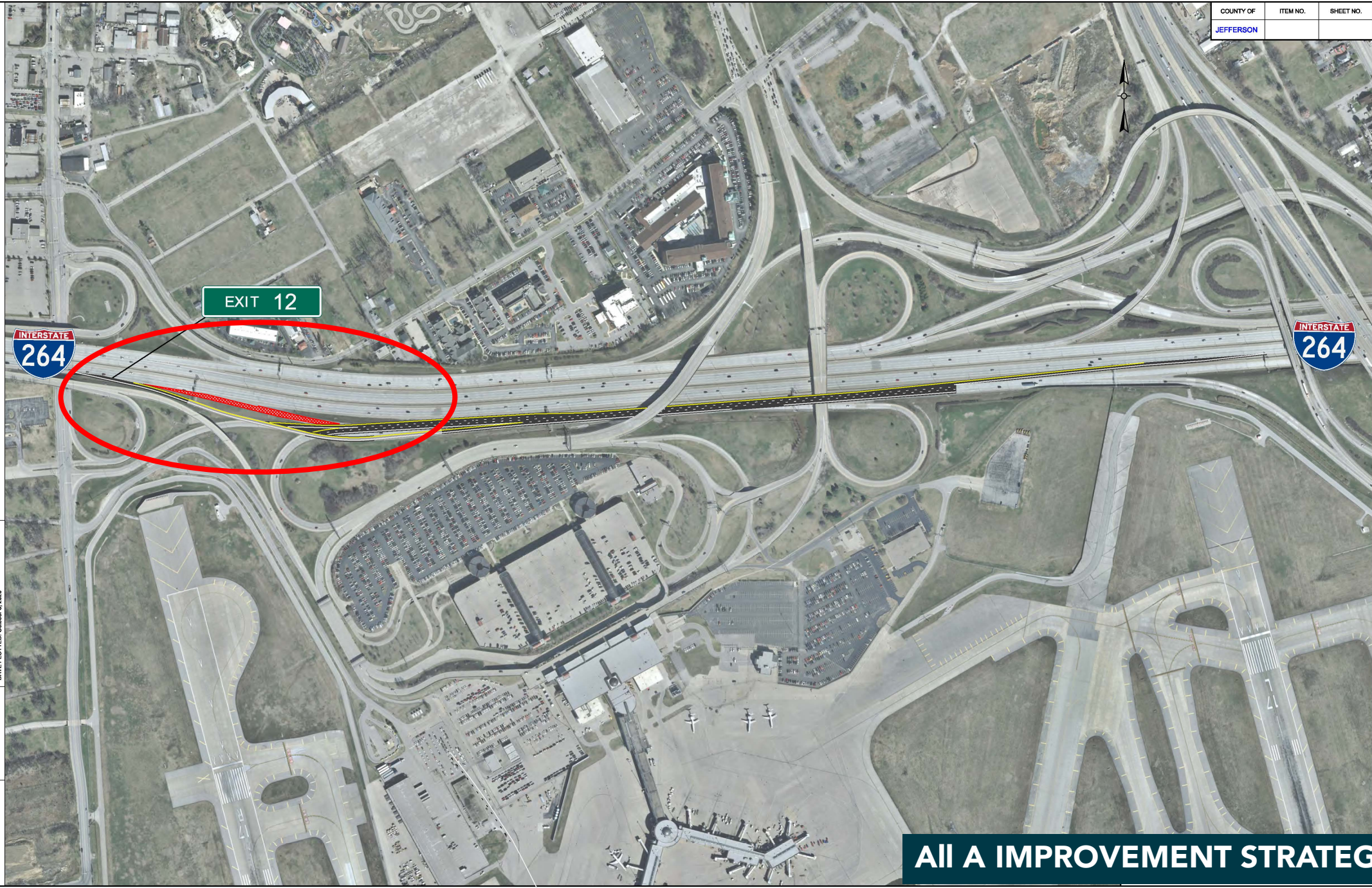
COUNTY OF	ITEM NO.	SHEET NO.
JEFFERSON		

FILE NAME: J:\187432 - I-65-I-264 INTERCHANGE & O CADD\ALTERNATES\187432 REVISED.DGN

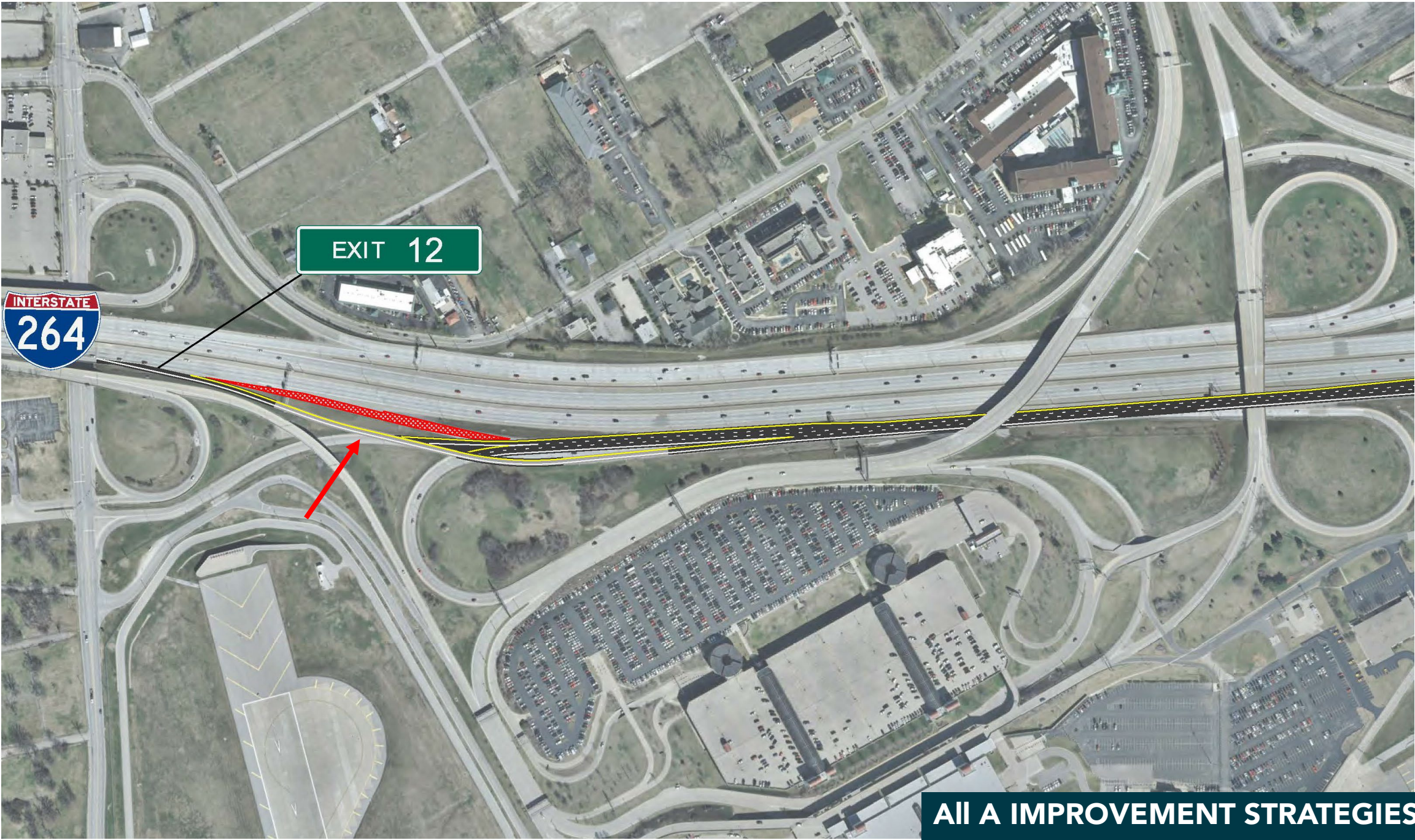
USER: garmstrong
DATE PLOTTED: October 9, 2020

E-SHEET NAME:

Power InRoads v8.11.9.387



ALL A IMPROVEMENT STRATEGIES



INTERSTATE
264

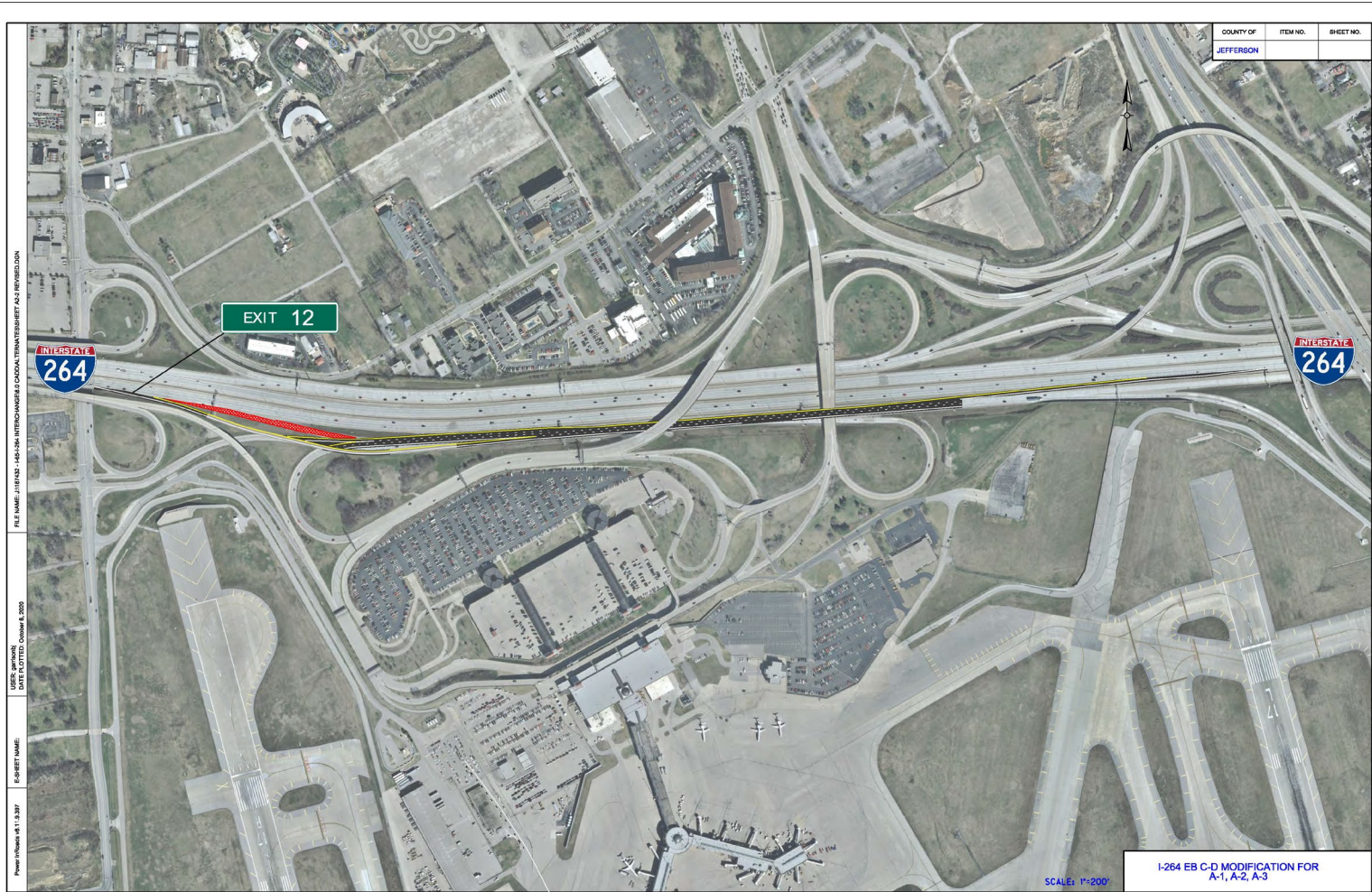
EXIT 12

ALL A IMPROVEMENT STRATEGIES



ALL A IMPROVEMENT STRATEGIES

LONG-TERM IMPROVEMENT STRATEGIES



IMPROVEMENT STRATEGY A COSTS

- A-1: \$11.6 to \$12.5 million
- A-2: \$11.8 to \$12.7 million
- A-3: \$11.3 to \$12.3 million

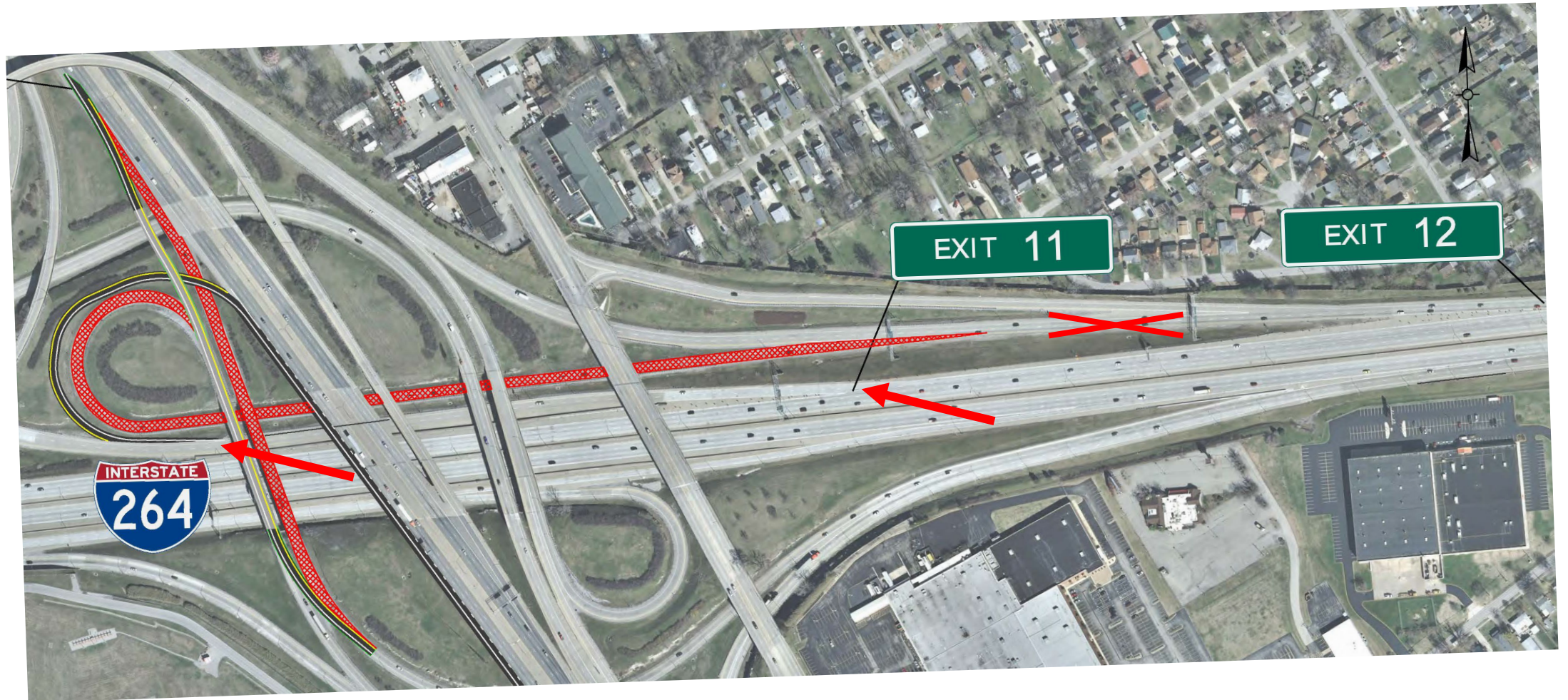
LONG-TERM IMPROVEMENT STRATEGIES

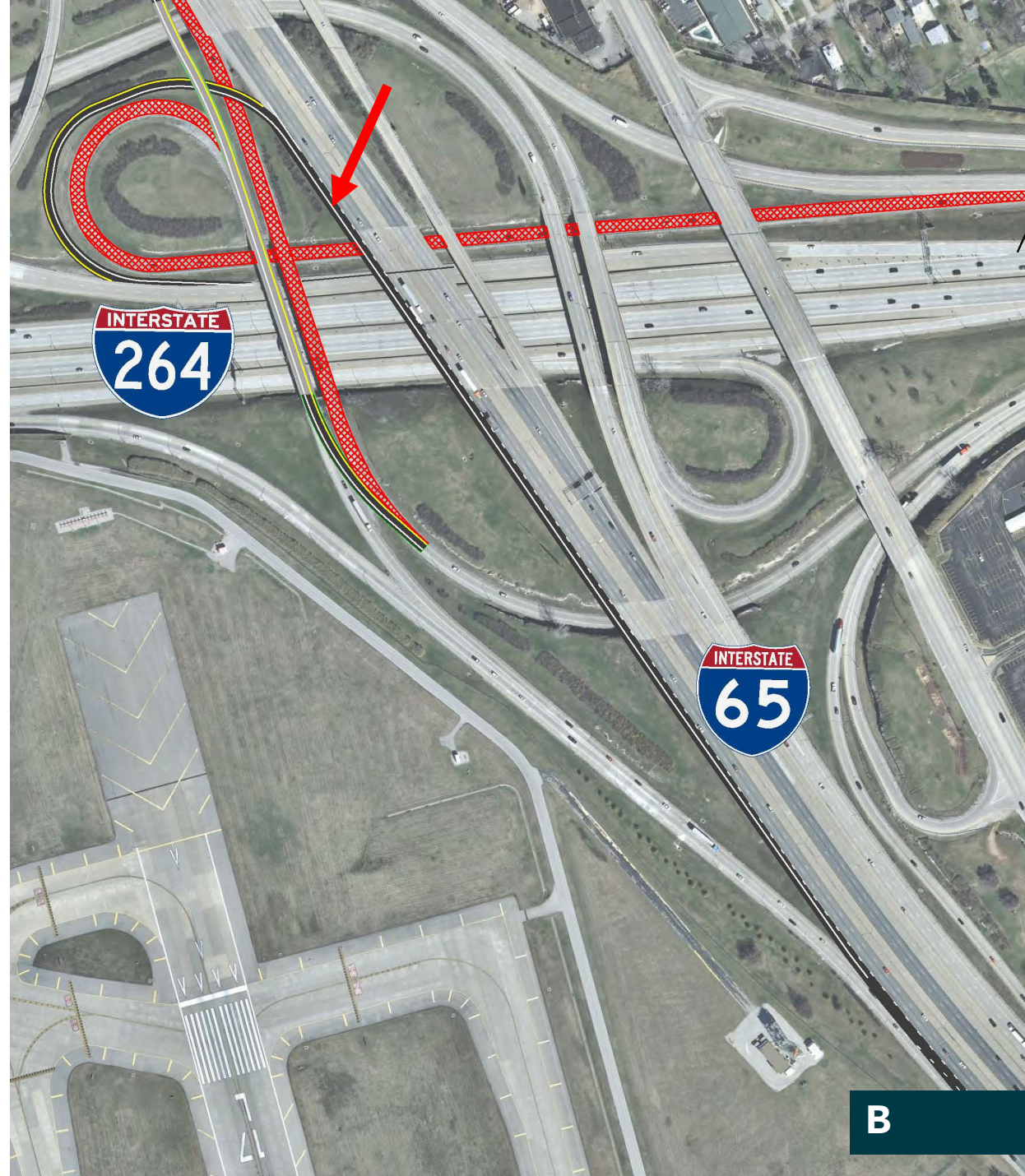


IMPROVEMENT STRATEGY B

- **Problem:** The tight radius of the I-264 westbound to I-65 southbound ramp slows vehicle traffic and causes congestion







COUNTY OF	ITEM NO.	SHEET NO.
JEFFERSON		



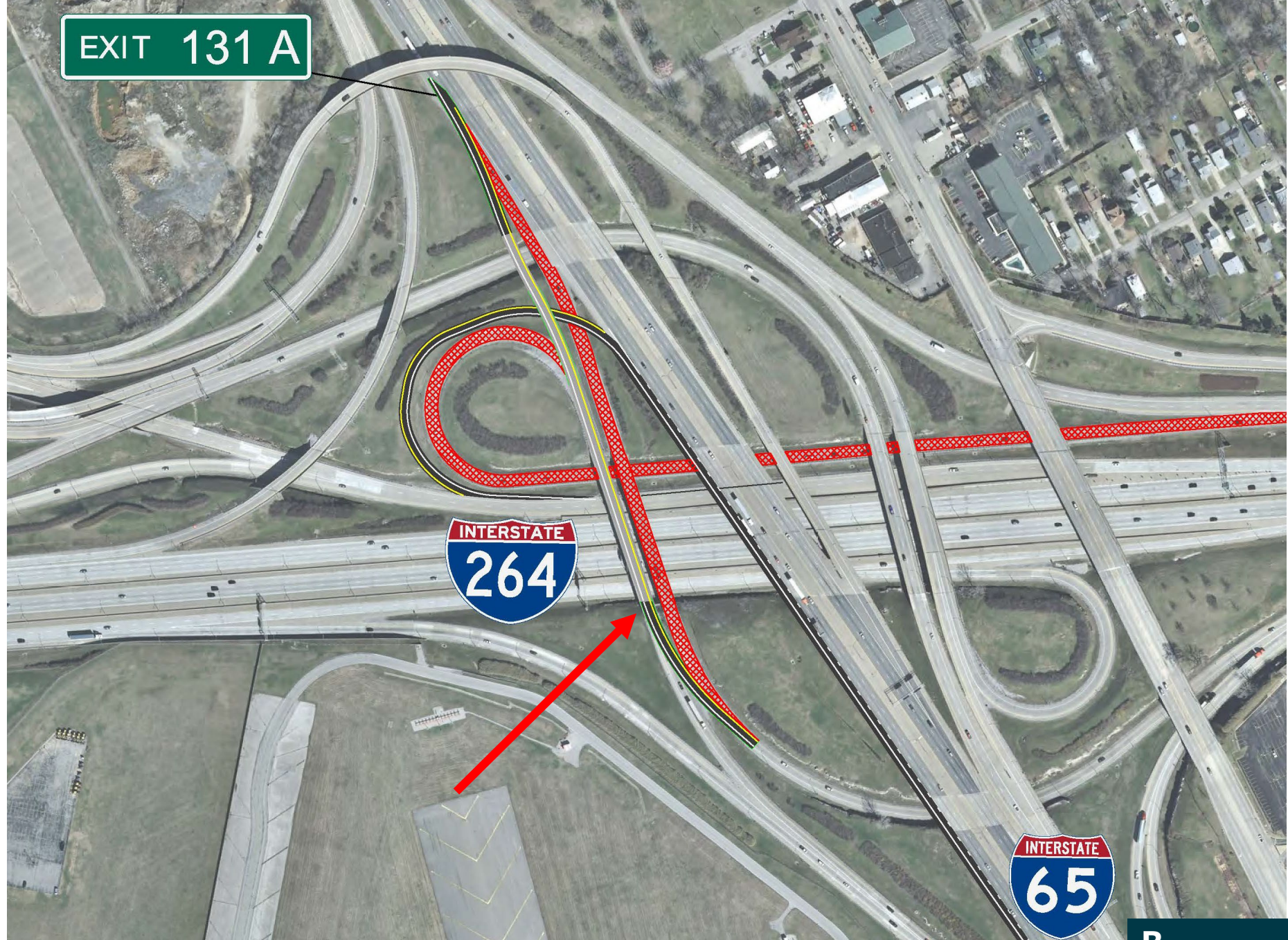
FILE NAME: J:\187432 - I-65-I-264 INTERCHANGE& O CADD\ALTERNATES\SHEET B1.DGN

USER: garmstrong
DATE PLOTTED: October 9, 2020

E-SHEET NAME:

Power: I-Roads v8.11.9.387

B



LONG-TERM IMPROVEMENTS



IMPROVEMENT STRATEGY B COSTS

- B: \$8.9 to \$9.6 million

LONG-TERM IMPROVEMENT STRATEGIES



IMPROVEMENT STRATEGY C

- **Problem:** the orientation of the two exits for I-65 southbound to the fairgrounds and I-264 eastbound and westbound cause driver confusion

COUNTY OF	ITEM NO.	SHEET NO.
JEFFERSON		



EXIT 131 B

EXIT 131 A

Preston Hwy

INTERSTATE
65

INTERSTATE
264

C

FILE NAME: J:\187432 - I-65+I-264 INTERCHANGE& O CADD\ALTERNATES\SHEET C1.DGN

USER: garmouth
DATE PLOTTED: October 7, 2020

E-SHEET NAME:

Power InRoads v8.11.9.387



LONG-TERM IMPROVEMENTS



IMPROVEMENT STRATEGY C COSTS

- C: \$3.9 to \$4.3 million

SHORT-TERM IMPROVEMENT STRATEGIES



ISSUES IMPACTING SAFETY

- Interchange Complexity
- Congestion
- Ramp Curvature
 - WB I-264 to SB I-65
 - NB I-65 to WB I-264
- Aging Infrastructure
 - Lighting, Guardrail, Signing, Striping
- Site Specific Issues

SHORT-TERM IMPROVEMENT STRATEGIES



PAVEMENT TATTOOS

- Route Shield pavement markings
- Help drivers identify correct lane without looking away from roadway
- Reduce unnecessary or last-minute lane changes.
- Preliminary Cost Estimate:
 - \$750,000

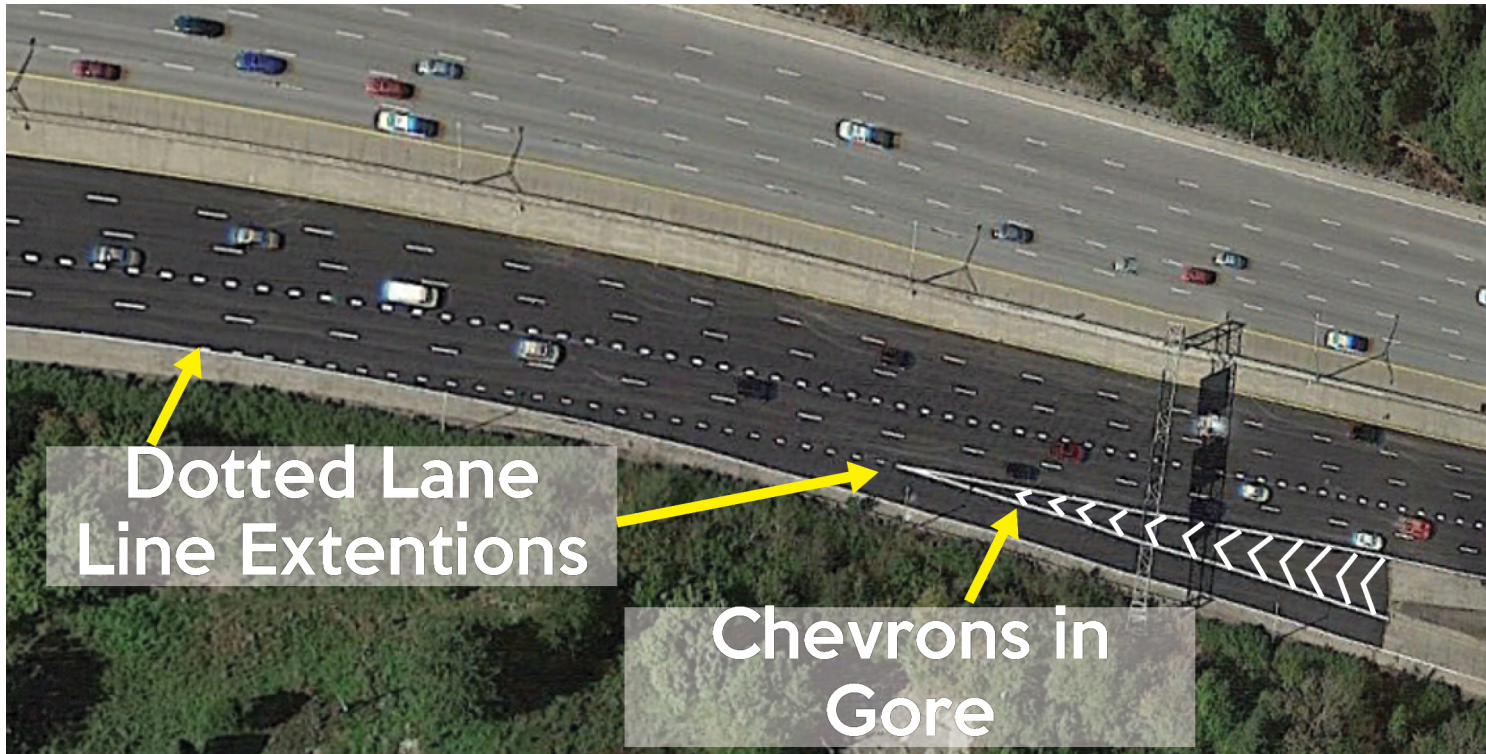
SHORT-TERM IMPROVEMENT STRATEGIES



GUIDE SIGN IMPROVEMENTS

- Consistent Messaging
- Use of improved retroreflectivity
- Symbols where possible
- “Arrow per lane” signage for improved navigation
- Preliminary Cost Estimate:
 - \$1,850,000

SHORT-TERM IMPROVEMENT STRATEGIES



IMPROVED STRIPING

- Improved delineation at merges, diverges, add lane, and dropped lanes
- Dotted lane line extensions to delineate movements
- Chevrons in gore areas
- Preliminary Cost Estimate:
 - \$1,370,000

SHORT-TERM IMPROVEMENT STRATEGIES



HIGH CONTRAST STRIPING

- Improved visibility of lane line markings
- Place on concrete surfaces and areas subject to sun glare
- Preliminary Cost Estimate:
 - \$850,000

SHORT-TERM IMPROVEMENT STRATEGIES



UPGRADE LIGHTING

- A separate KYTC Statewide re-lamping project includes this interchange
- Lighting Needs Identified through this planning study:
 - Outdated HPS lighting should be replaced with more efficient LED
 - Poles in some locations frequently struck
 - Upgrade Southbound I-65 to Eastbound I-264 ramp underpass lighting
- Coordination with re-lamping project to determine any lighting needs not met
- Identify projects for unresolved needs

SHORT-TERM IMPROVEMENT STRATEGIES



HIGH FRICTION SURFACE TREATMENT

- Pavement treatment to reduce roadway departures by increasing friction
- Locations with high proportion of single vehicle crashes
- 2 Locations:
 - WB I-264 to SB I-65
 - NB I-65 to WB I-264
- Preliminary Cost Estimate:
 - \$2,050,000

SHORT-TERM IMPROVEMENT STRATEGIES



UPGRADE GUARDRAIL

- Upgrade to newest testing standards
- Vehicle fleet used in new crash testing more representative of the types of vehicles likely on the roadway
- Preliminary Cost Estimate:
 - \$2,300,000

PUBLIC INVOLVEMENT



I-65/I-264 Interchange Planning Study

SHARE YOUR FEEDBACK

The Kentucky Transportation Cabinet (KYTC) launched a planning study late last year to identify improvements to the I-65/I-264 interchange system. You can now review proposed long-term and short-term solutions and share your feedback!

OCTOBER

				1	2	3
4	5	6	7	8	9	10
11	12	13	14	15	16	17
18	19	20	21	22	23	24
25	26	27	28	29	30	31

PUBLIC INVOLVEMENT

OCTOBER 21 TO
NOVEMBER 22

ROUND 2

NOVEMBER


1	2	3	4	5	6	7
8	9	10	11	12	13	14
15	16	17	18	19	20	21
22	23	24	25	26	27	28
29	30					

WE NEED YOUR HELP!

- Help us reach more people virtually
- Opens **TOMORROW** through Nov. 22
- Includes:
 - Strategy overview videos
 - Questionnaire
 - KYTC web page
 - Email newsletter

DOWNLOAD & SHARE


I-65/I-264 Interchange Planning Study

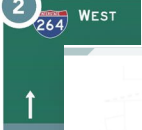


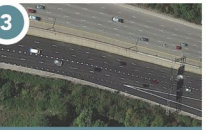
Short-Term Improvement Strategies


The Kentucky Transportation Cabinet launched a planning study to identify improvement strategies for the I-65/I-264 interchange. Seven short-term improvement strategies addressing issues such as inconsistent lighting, sharp ramp, and lane markings that cause confusion and unsafe driving conditions are being proposed.


SHARE YOUR FEEDBACK
Review solutions, share your feedback, watch project videos and documents at: <https://bit.ly/AirportInterchange>. Responses are due by 11/15/2023.


1

Install Pavement Tattoos

2

Improve Visibility


3

Enhance Striping at Decision Points

4

Install High Friction Surface Treatment

5

Apply High Friction Surface Treatment

6

Install High Friction Surface Treatment

I-65/I-264 Interchange Planning Study



Proposed Improvement Strategies Questionnaire


The Kentucky Transportation Cabinet (KYTC) launched a planning study late last year to identify strategies to reduce congestion and improve safety of the I-65/I-264 (Watterson Expressway) interchange in Jefferson County.

KYTC is seeking public feedback on improvement strategies proposed by our Project Team. These strategies are based on analysis of collected traffic, safety and roadway data, previous public feedback and meetings with stakeholders.

Please review each proposed improvement strategy outlined below along with the corresponding videos and provide your input in this questionnaire.

[Next](#)

Powered by [QuestionPro](#)



This presentation will be available for download plus:

- Project fact sheets
- Maps for improvement strategies
- Public involvement flyer
- Early access to questionnaire

The Transportation Cabinet began a study early this year on an adjacent section of I-65, north of this interchange, in between I-264 and E. Jefferson Street (KYTC Item No. 5-569).

The purpose of this study is to develop strategies to improve traffic flow, safety and access along this corridor of I-65.

Additional information will be forthcoming on the KYTC District 5 website. The first stakeholder meeting is anticipated by the end of this year.

Q&A



Submit your questions now.

For further questions after presentation:

- interchange65@gmail.com

